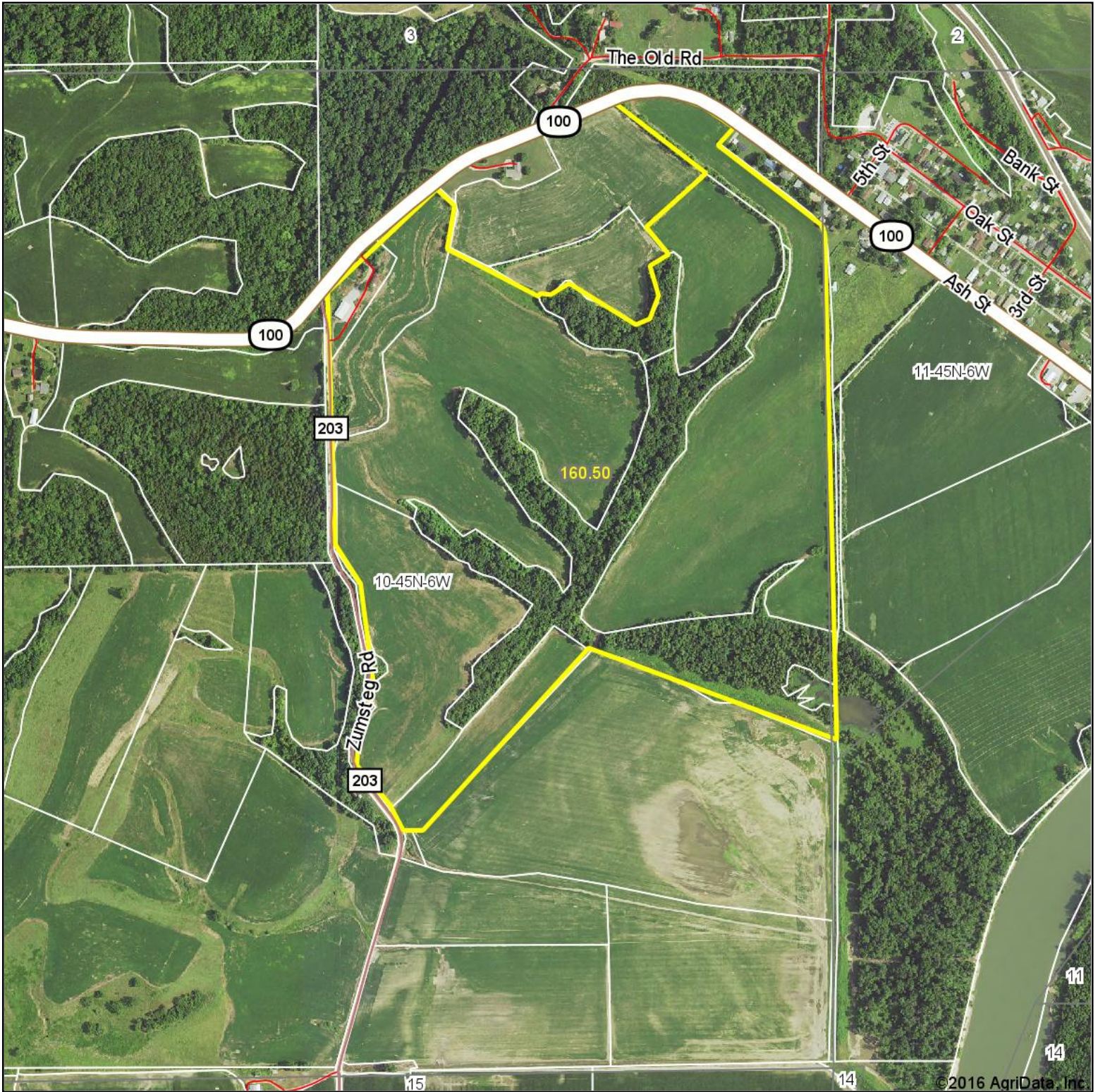


Aerial Map



iAuctionandRealty.com

Maps Provided By:



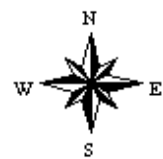
© AgriData, Inc. 2016

www.AgriDataInc.com

map center: 38.666373, -91.570271

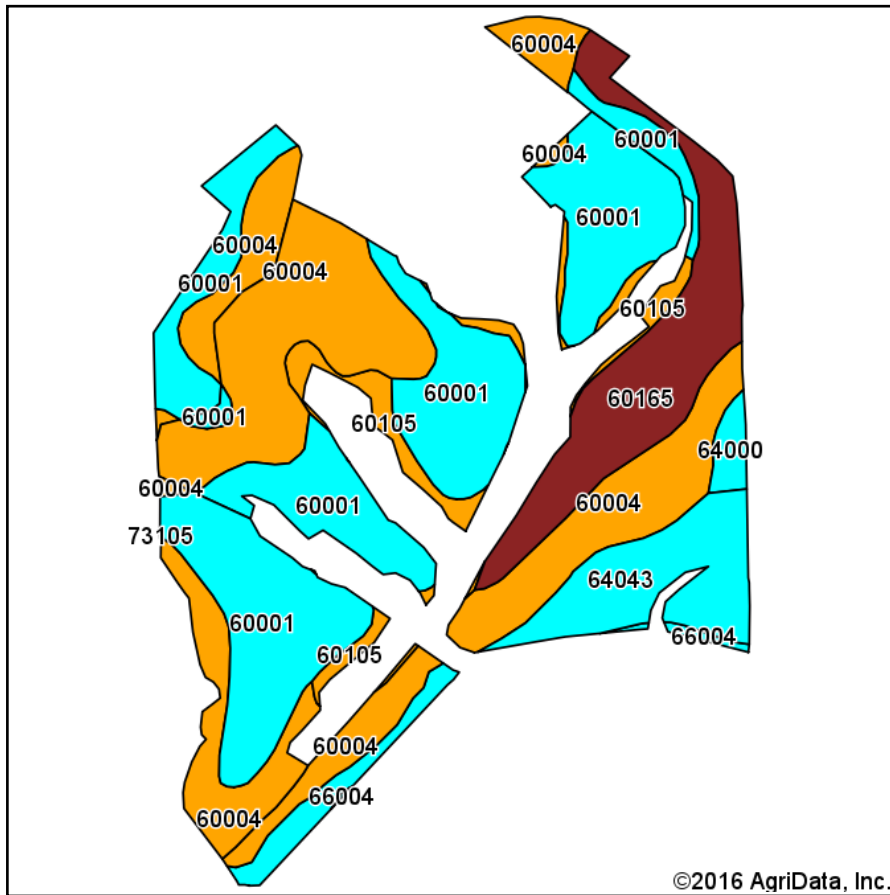
0ft 840ft 1680ft

10-45N-6W
Gasconade County
Missouri

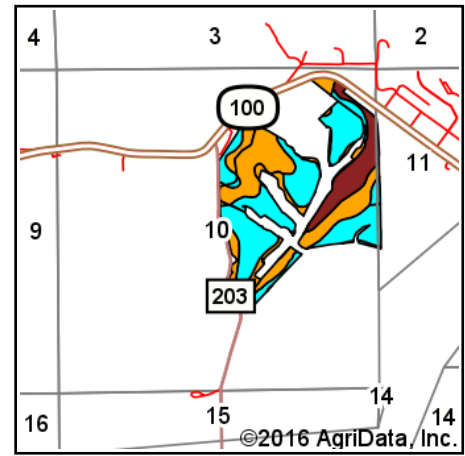


9/23/2016

Soils Map



Soils data provided by USDA and NRCS.



State: **Missouri**
 County: **Gasconade**
 Location: **10-45N-6W**
 Township: **Richland**
 Acres: **123.75**
 Date: **9/23/2016**



iAuctionandRealty.com

Maps Provided By:



© AgriData, Inc. 2016

www.AgriDataInc.com



Area Symbol: MO073, Soil Area Version: 18

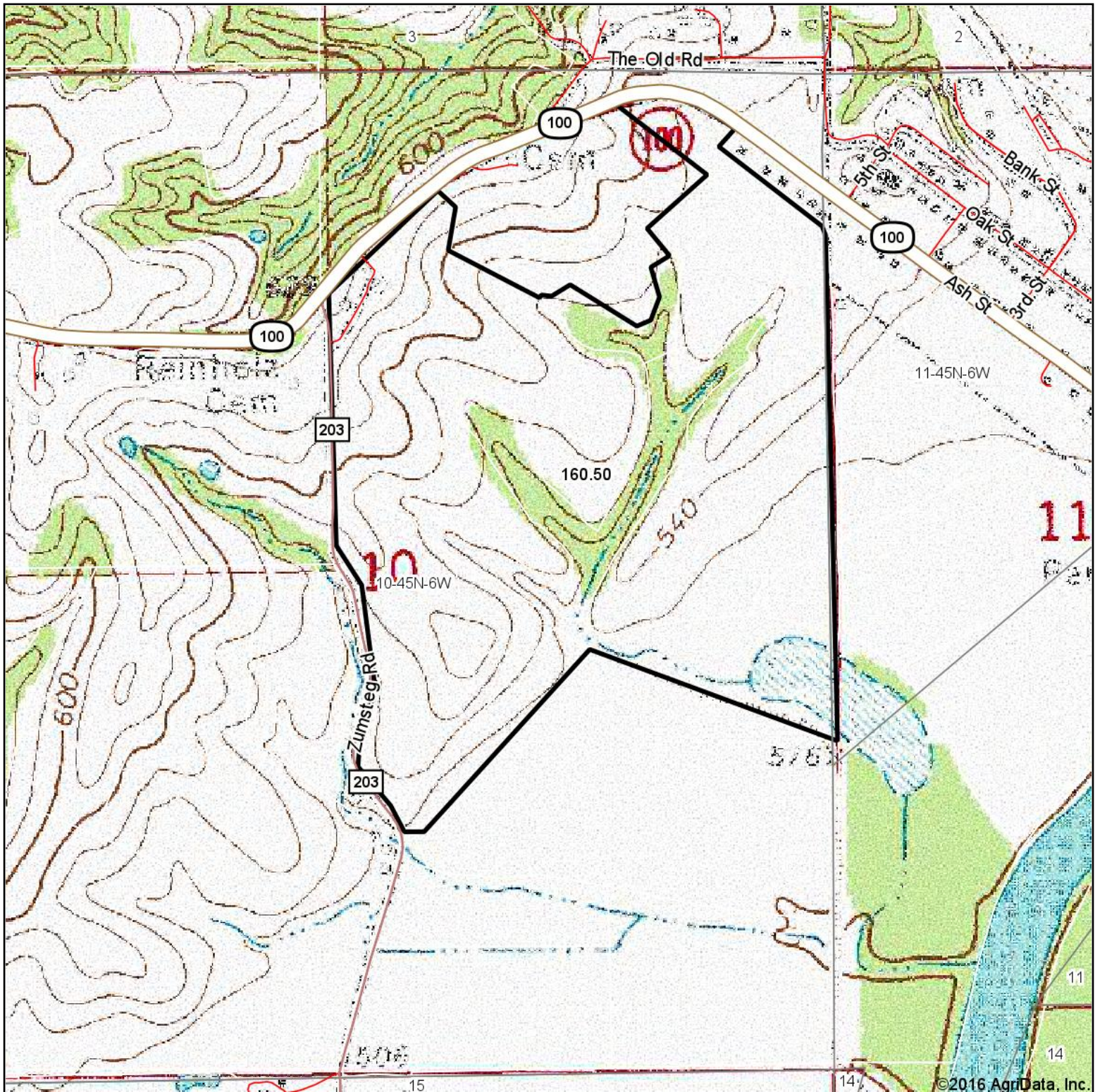
Code	Soil Description	Acres	Percent of field	Non-Irr Class Legend	Non-Irr Class *c	Corn	Grain sorghum	Soybeans	Winter wheat
60001	Menfro silt loam, 5 to 9 percent slopes, eroded	45.40	36.7%		IIIe				
60004	Menfro silt loam, 14 to 20 percent slopes, eroded	42.96	34.7%		VIe				
60165	Menfro silt loam, 2 to 5 percent slopes	15.61	12.6%		Ile				
64043	Tanglenook silty clay loam, 0 to 2 percent slopes, rarely flooded	12.62	10.2%		IIIw				
60105	Gatewood-Menfro complex, 20 to 35 percent slopes, bouldery	5.37	4.3%		VIIs				
64000	Raccoon silt loam, 0 to 3 percent slopes, rarely flooded	1.34	1.1%		IIIw				
66004	Dockery silt loam, 0 to 2 percent slopes, frequently flooded	0.45	0.4%		IIIw	5	4	1	2
Weighted Average						*-	*-	*-	*-

Area Symbol: MO073, Soil Area Version: 18

*c: Using Capabilities Class Dominant Condition Aggregation Method

Soils data provided by USDA and NRCS.

Topography Map



map center: 38.666373, -91.570271

0ft 840ft 1680ft

United Country
Real Estate

iAuctionandRealty.com

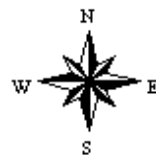
Maps Provided By:

surety
CUSTOMIZED ONLINE MAPPING

© AgriData, Inc. 2016

www.AgriDataInc.com

10-45N-6W
Gasconade County
Missouri



9/23/2016